

Hot Design Tips

Stairway Location and Handrail Extensions at an Internal Corridor

In accordance with AS1428.1-2009 Clause 11.1 (b), stairs that intersect at an internal corridor shall be set back in accordance with Figure 26(B), as shown below.

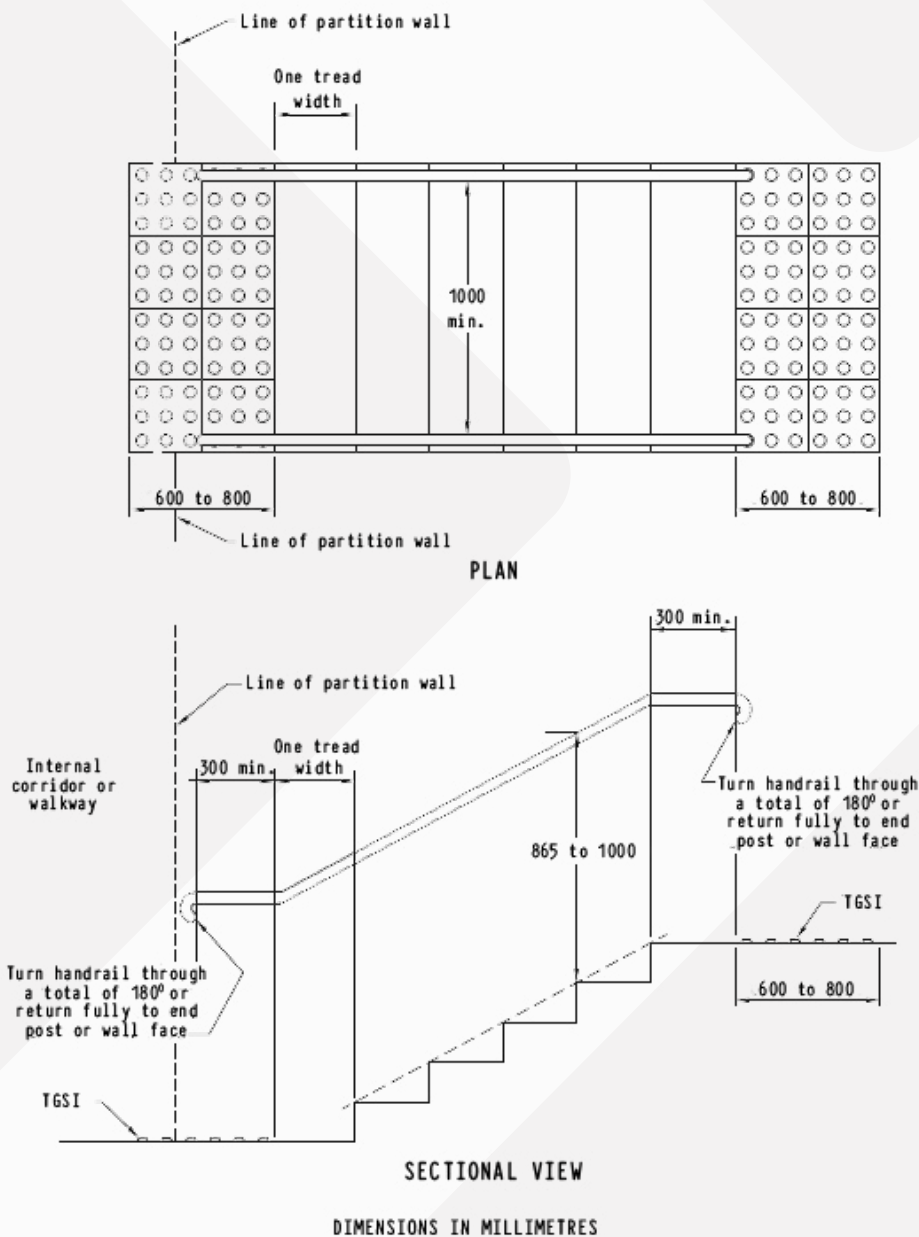
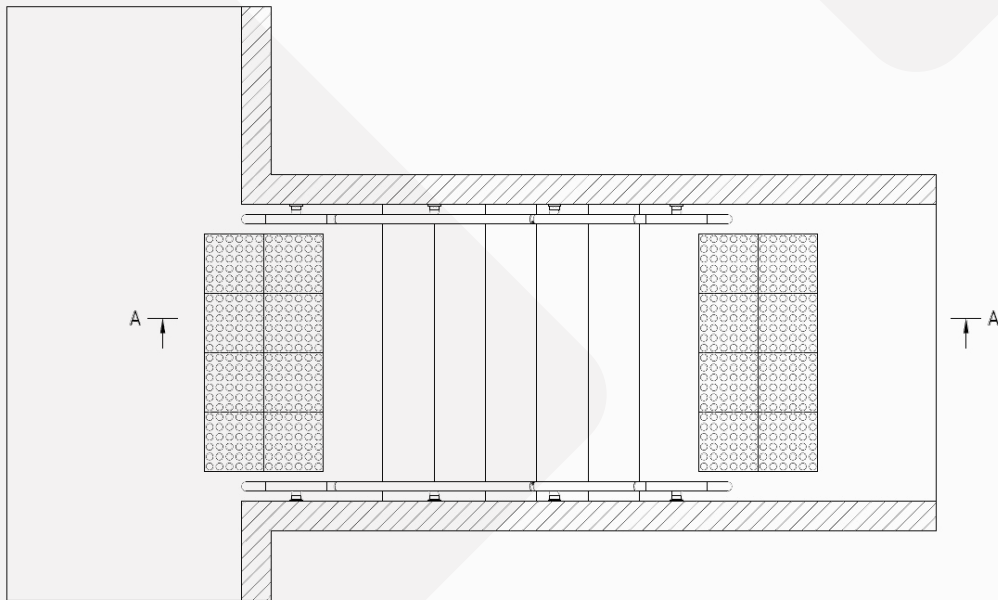


FIGURE 26(B) STAIRWAY LOCATION AND HANDRAIL EXTENSIONS AT END OF STAIRWAY OTHER THAN AT LINE OF BOUNDARY

Hot Design Tips

From what is shown in Figure 26(B), it is interpreted that the partition wall must allow for a compliant handrail extension at the bottom of a stair, without the handrail protruding past the wall.

As shown in the plan & section view below, Moddex recommends the minimum set back must allow for at least one tread length + 435 mm for our standard 180° closure bend.



SECTION A-A

