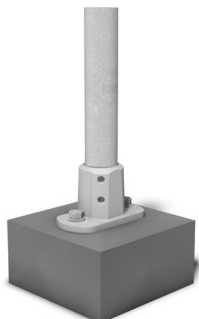
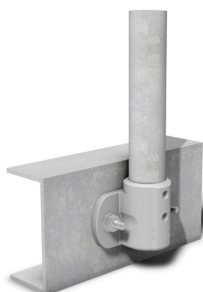


# Mount Options



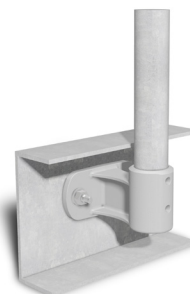
**T2 - Top Mount (2 Fixings)**

Concrete - using M12 x 100mm galvanized screwbolts  
Steel



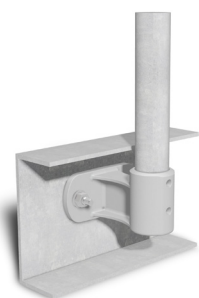
**F2 - Face Mount (2 Fixings)**

Concrete - using M16 hi-tensile galvanized bolts



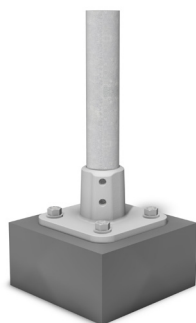
**C11 - Channel Mount (2 Fixings)**

110 mm Offset Steel - using M16 hi-tensile galvanized bolts



**C13 - Channel Mount (2 Fixings)**

130 mm Offset  
Steel - using M16 hi-tensile galvanized bolts



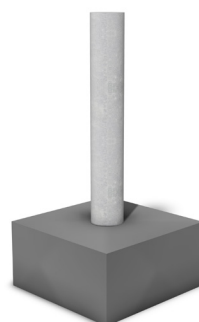
**T4 - Top Mount (4 Fixings)**

Concrete - using M12 x 100mm galvanized screwbolts  
Steel - using M16 hi-tensile galvanized bolts



**GD - Inground Mount**

As per engineers' specifications



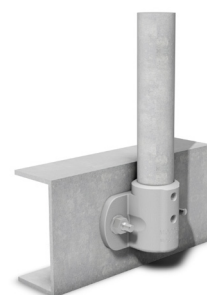
**CD - Cored Mount**

As per engineers' specifications



**AM - Angle Mount (2 Fixings)**

Concrete - using M12 x 100mm galvanized screwbolts  
Steel - using M16 hi-tensile galvanized bolts



**CY - Conveyor Mount (2 Fixings)**

Steel - using M16 hi-tensile galvanized bolts

## IMPORTANT

Fixing type, size & number per mount are recommendations only. Consequent selection & use remains the specifier and/or installer's responsibility, taking into account the intended application, load ratings & actual conditions on the particular site. Refer manufacturer's recommendations & specifications, user manuals and engineers' specifications /recommendations.