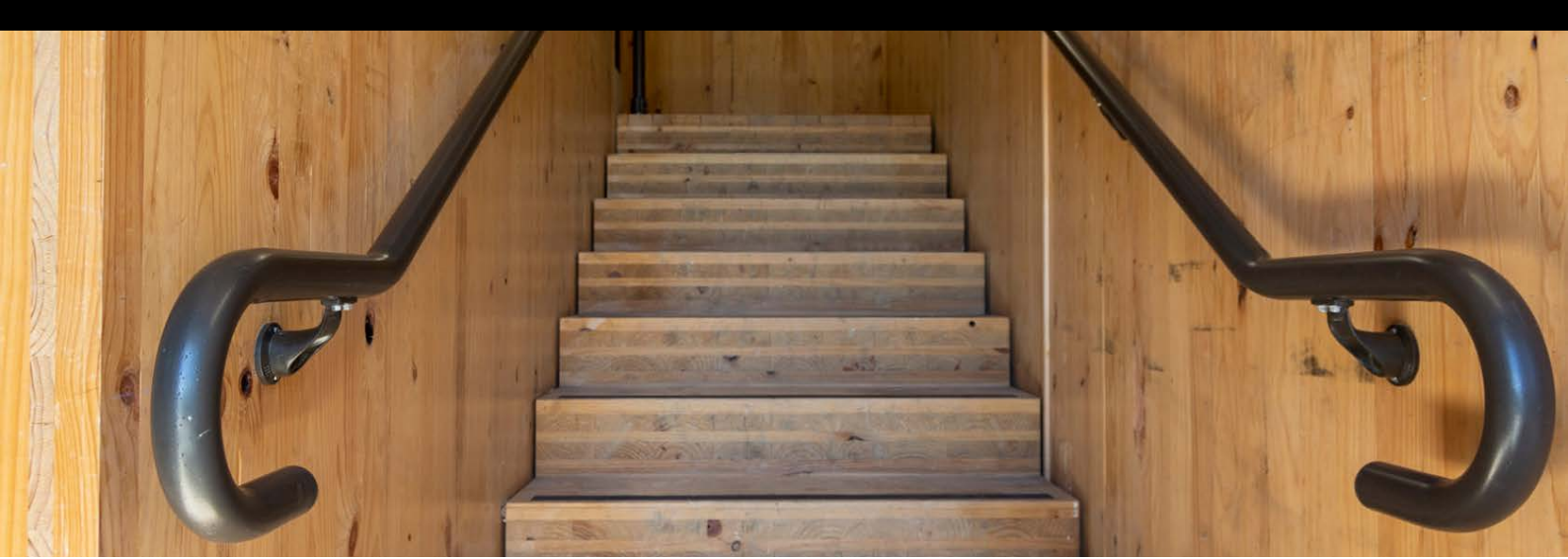




# Hotels

Industry Mini Guide Series



## INTRODUCTION

---

The hotel industry in Australia and New Zealand is poised for significant growth, reflecting its resilience and adaptability in the wake of the pandemic. With projections indicating that the Australia & Oceania market will exceed AUD\$12 billion in 2024 and continue to grow at a steady annual rate of 3.98%, the industry's market volume is expected to soar more than AUD\$14 billion by 2029<sup>1</sup>.

As Australia and New Zealand emerge as key players in the global hotel market and hotel development regains an upward trajectory, Moddex remains the most trusted partner for hoteliers, architects, construction companies, and developers.

With a proven track record of successful collaborations in the hospitality sector, Moddex is committed to supporting the growth and success of hotel projects, creating safe, stylish, and enduring environments across Australia and New Zealand. Our expertise in delivering innovative, compliant, and aesthetically pleasing modular handrail and

balustrade systems ensures the highest safety standards and seamless project execution.

With years of research and development into each modular configuration, Moddex's modular barrier systems are pre-engineered for 100% up-to-date compliance, industrial-grade durability, replaceability and easy modification.

Supplied with compliance documentation and downloadable files such as NATSPEC, MASTERSPEC, and Revit files, from our BIM library, Moddex systems are ready for use in your design, ensuring every turn of your site is safer and up to code.

**With Moddex, everything fits.**

<sup>1</sup> <https://www.statista.com/outlook/mmo/travel-tourism/hotels/australia-oceania>





# PROJECT SPOTLIGHT

## LA QUINTA HOTEL

**Location:** Queenstown, New Zealand

**Client:** Safari Group Ltd

**Products:** Assistrail® - Disability Handrails AR10, AR150; Conectabal® - Commercial Balustrades CB30

More than 350m of Moddex handrail and balustrade systems were designed, supplied and installed on the two internal access stairs and various external ramps and stairs. An iron sand powder coat finish was completed by Moddex to complement the bold design elements of the hotel. 50% faster on-site than any other barrier system, Moddex boasts the fastest lead times from customisation to delivery.



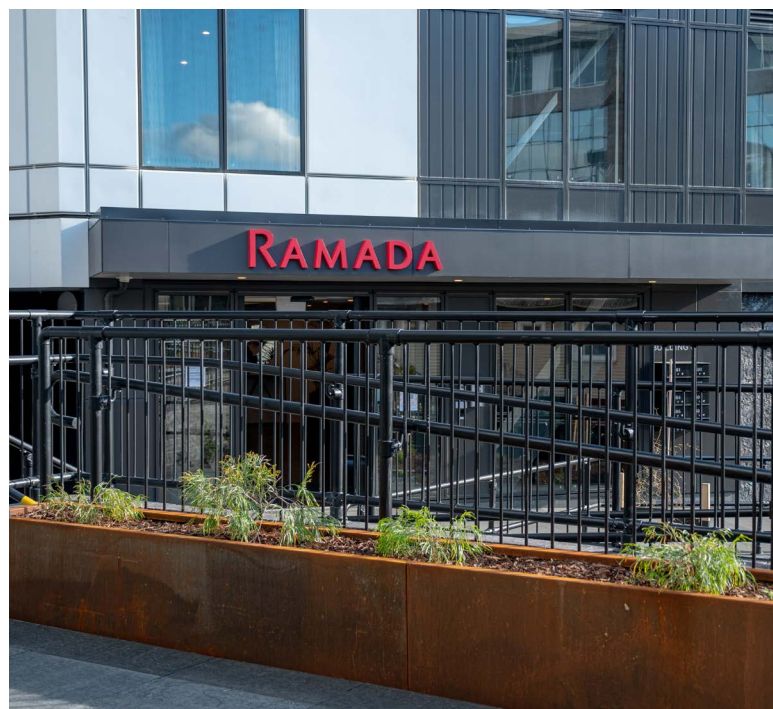
## RAMADA, NEWMARKET

**Location:** Auckland, New Zealand

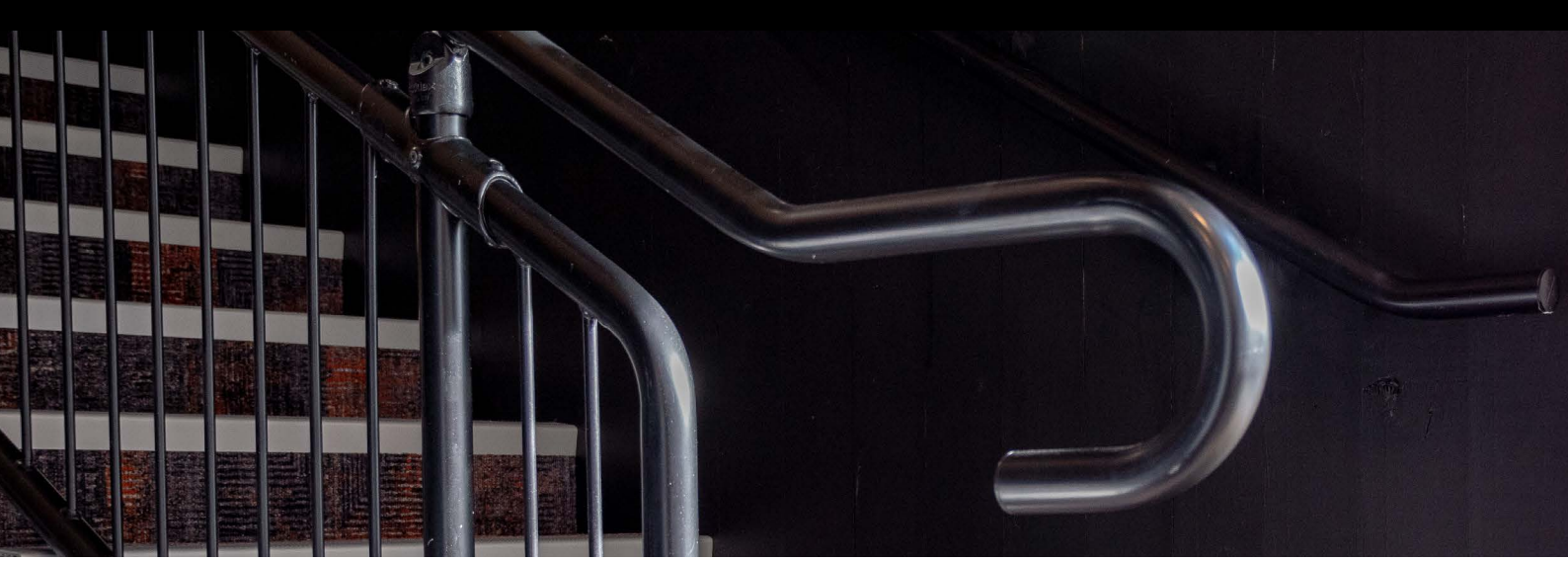
**Client:** Safari Group Ltd

**Products:** Assistrail® - Disability Handrails AR10, AR30, AR40, AR150; Conectabal® - Commercial Balustrades CB10, CB30, CB40

Finished with a matte black powder coat, Moddex's flexible balustrading and handrails were selected for interior and exterior stairways, ramps and carpark of this new 63-room hotel. Having worked with Moddex before, on projects like La Quinta Hotel, Safari could put their trust in Moddex, knowing we would provide a compliant result, on time and within budget.







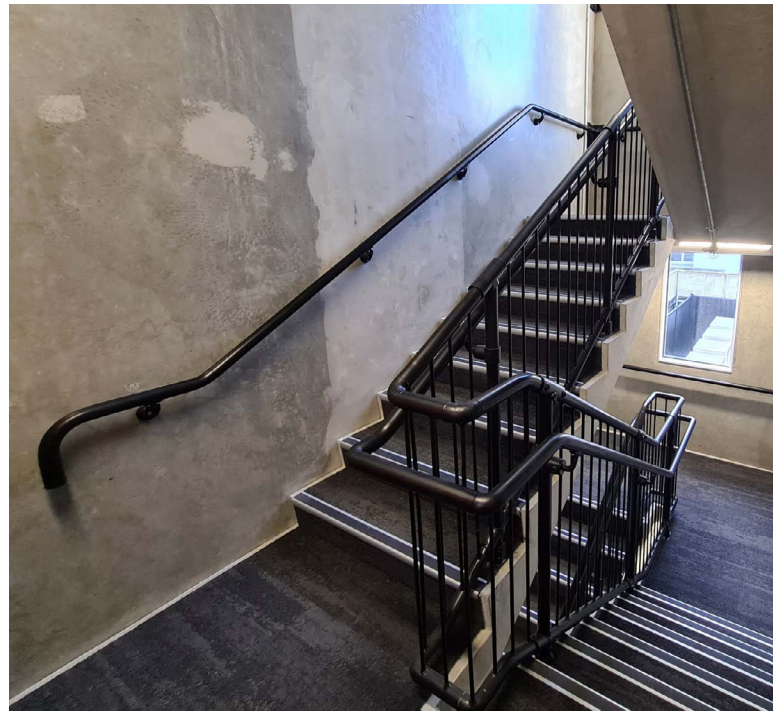
## EDWIN STREET HOTEL

**Location:** Auckland, New Zealand

**Client:** Haydn & Rollett

**Products:** Assistrail® - Disability Handrails AR30, AR150; Conectabal® - Commercial Balustrades CB40

Moddex was selected by Haydn & Rollett to supply balustrading and disability handrails to the two fire stairs, outdoor service stairs and the interior corridor ramp. Customised to suit the many difficult angles of the fire stairs, Moddex designed and manufactured the modular systems offsite. As per usual, the modular flexibility of Moddex systems eliminated the need for hot works permits, toxic fume safety procedures and site shutdowns associated with the traditional welding method of handrails. Resulting in a smooth, stress free, punctual delivery within budget.



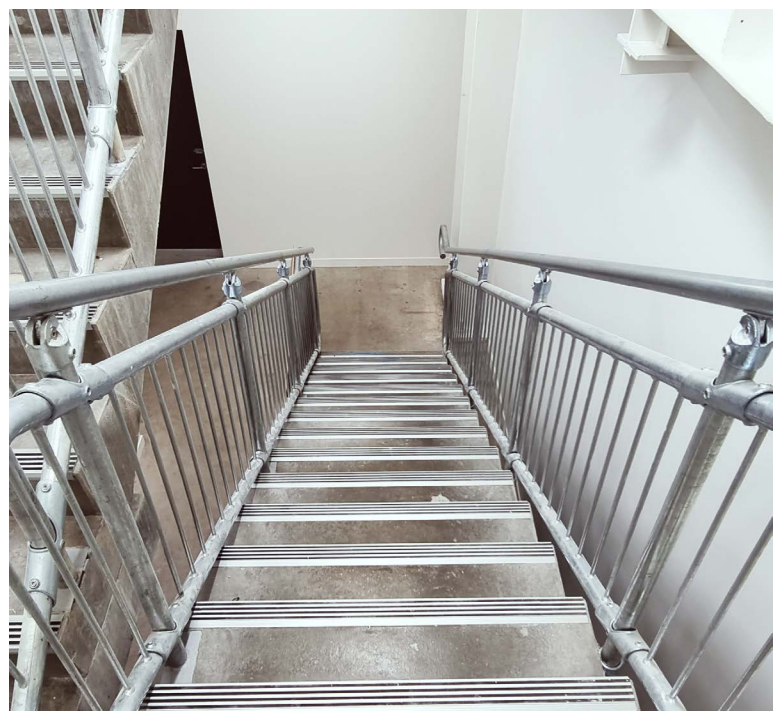
## CHRISTCHURCH CITY HOTEL

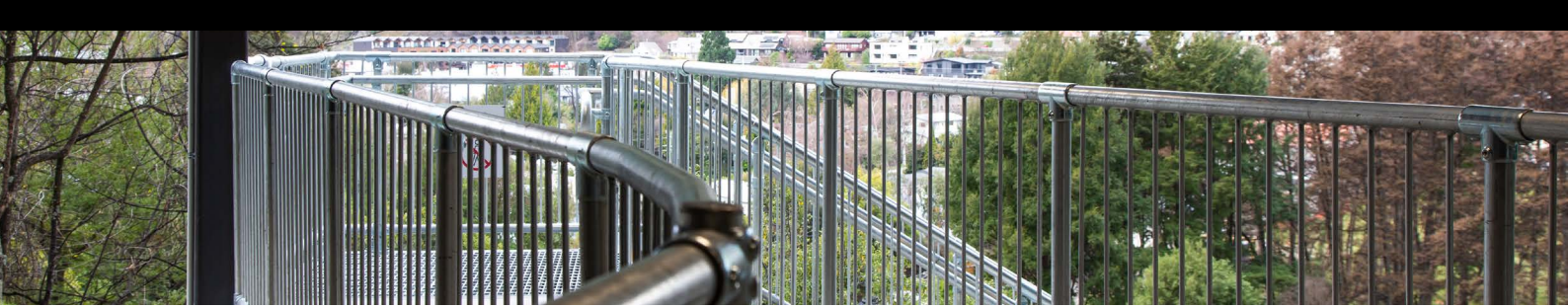
**Location:** Christchurch, New Zealand

**Client:** Cook Brothers Construction

**Products:** Assistrail® - Disability Handrails; AR150; Conectabal® - Commercial Balustrades CB30

On this new architecturally designed project, Moddex designed, supplied and installed handrail and balustrade systems on the back-of-house egress stair. Moddex played a key role in streamlining the specification of compliant solutions, supplying downloadable design files and PS1 documentation. Working with the contractor for a guaranteed fit on site, we also executed the welding of the modular system stanchions to the existing pre-cast stair steel plates, an extra scope of works that is usually not required when you use Moddex systems.





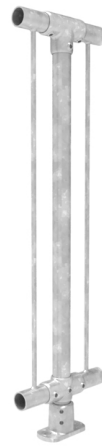
## MODDEX SYSTEM RANGE



**Assistrail®** – Disability Handrails. Ensures that the public and mobility impaired or vision impaired can traverse your site safely and with ease.



**Bridgerail™** – Bridge Barriers. Ensures balustrades on bridges can be specified and fitted effortlessly, with compliance guaranteed.



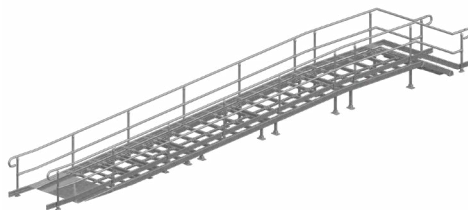
**Conectabal®** – Commercial Balustrades. Mitigates risk and prevent falls from height.



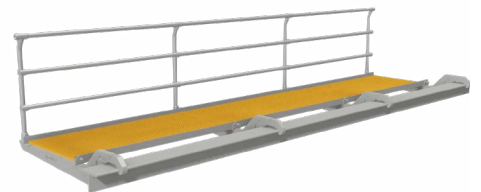
**Tuffrail®** – Industrial Handrails. Tough, corrosion-resistant handrails for use in areas where chemical fumes or sea spray could cause corrosion.



**Bikesafe®** – Disability Handrails. Ensures that the public and mobility impaired or vision impaired can traverse your site safely and with ease.



**Ezibilt™** – Modular Ramp, Deck & Stair Solution. The ultimate pre-engineered modular solution for fast-tracked construction of accessibility stairs, ramps and decks.



**KlipTread™** – Clip-On Walkway & Handrail System. A pre-engineered, clip-on walkway and handrail system specially designed for bridge infrastructure.



# ABOUT MODDEX

---

Moddex is Australasia's leading manufacturer of modular, no-weld, hot dip galvanised barrier systems for industrial, commercial and non-residential construction projects.

Pre-engineered for structural integrity, all proprietary systems by Moddex are load tested and configured to Australian and New Zealand Standards (AS/NZS), Workplace Health and Safety guidelines (WHS/OSH), Australia's National Construction Code (NCC/BCA) and the New Zealand Building Code (NZBC).



## **With Moddex, Everything Fits™.**

We operate nationwide in Australia and New Zealand for design, supply, installation, delivery and advice.

Whether you need tender support or technical or compliance advice, we're here for you in Brisbane, Sydney, Canberra, Melbourne, Hobart, Adelaide, Perth, Darwin, Auckland and Christchurch.

Call Moddex's main sales office on 1800 663 339 (Australia) or 0800 663 339 (New Zealand).

**[www.moddex.com](http://www.moddex.com)**

**All information provided is correct as of April 2024**

**moddex®**  
EVERYTHING FITS