

MOUNT TYPES

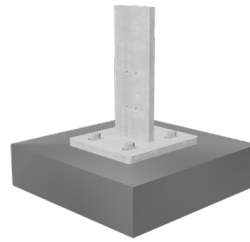
Handrail & Balustrade Options



T2 - Top Mount
(2 Fixings)



T4 - Top Mount
(4 Fixings)



T4 - Top Mount
(4 Fixings)*



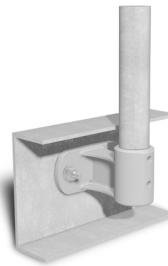
F2 - Face Mount
(2 Fixings)



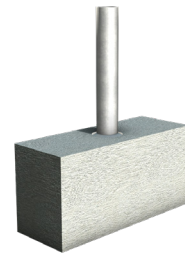
F4 - Face Mount
(4 Fixings)*



C11 - Channel Mount
(2 Fixings)



C13 - Channel Mount
(2 Fixings)



CD - Cored Mount



GD - Inground Mount



AM - Angle Mount
(2 Fixings)



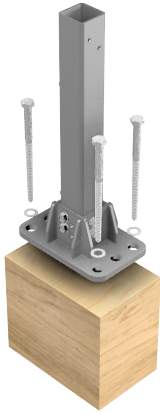
CM - Collapsible Mount

Mount type specification subject to nominated compliance standards, substrate and confirmation of system loadings to the nominated substrate, by substrate designer.

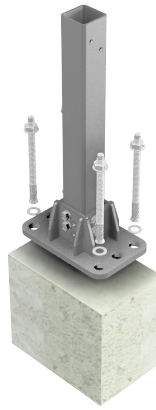
*Note: Only available for Bridgerail™ Product Range

MOUNT TYPES

Ramp Options



Fixing to Timber



Fixing to Concrete



Fixing Inground*

Download Ezibilt Ramp, Walkway & Stair spec sheet for further mounting information.

*Note: Footing depth and diameter to be specified by builders site engineer. Moddex cannot provide a standard footing detail due to multiple soil types.

Mount type specification subject to nominated compliance standards, substrate and confirmation of system loadings to the nominated substrate, by substrate designer.

