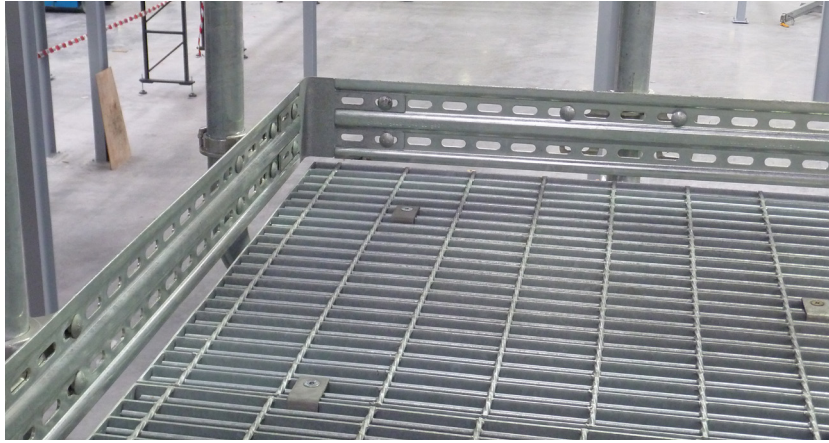


Tuffgard® Toeboard System Specifications

Tuffgard® Toeboard systems for protection against falling objects from elevated platforms and mezzanines. Simply retrofitted to new or existing guardrails. AS/NZS 1657 compliant.



Key features

- › Proprietary designs pre-engineered for structural integrity
- › Hot dip galvanized steel, stainless steel or aluminium for enhanced corrosion protection
- › Modular, no-weld components for simple and fast assembly
- › 48% lighter & up to 20% less flex than traditional alternatives
- › Easily repaired, modified or extended with Ezibilt parts
- › Simply retrofitted to existing guardrails, or configured with Tuffrail
- › Available ex-stock & flat pack delivery

Applications suited to

- › Loading bays and mezzanines
- › Industrial walkways & platforms
- › Mines & manufacturing facilities
- › Commercial and industrial buildings

Specification Summary

Supply and install the proprietary Tuffgard® Toeboard system to barrier according to Moddex specifications, or by a Moddex accredited installer.

Technical Data

Material

MD415	Marine grade anodised aluminium
MD515	Hot dip galvanized steel/grade C250 & 350
Toeboard type MD615	Stainless Steel/grade 316
Clamp fittings	Alymag
Clamp locking screws M12x1.75	Stainless steel (410 S21)

Optional	Powder coating and paint specs
-----------------	--------------------------------

Dimensions

Variable depending on building/application/code

Toeboard

Width	120mm
Thickness	3.0mm (9.0mm profile)

Weight

Variable depending on building/application/code

MD415@ 4.0m	6kg
MD515 & MD516 Toeboard @ 4.0m	11kg

Fixings

Mounting	M10x 25 cup bolt (Xcote) and nyloc nut
-----------------	--

*Other Fixing options are available on request

Compliance

Tuffgard® Toeboard is designed and manufactured in accordance with Australian and New Zealand Standards AS/NZS1657:2018, (5.6.6 Toeboard, 6.1.2 Toeboard, building regulations (NCC & BCA) and relevant statutory OHS Codes of Practice/Guidelines.

Testing

Stringent vibration endurance tests have been performed and independent testing has been carried out to confirm the suitability of the Moddex system in maritime conditions.

Warranty

5 years from date of purchase subject to correct installation, use and maintenance in accordance with manufacturer's specifications and recommendations, unless otherwise negotiated at the time of purchase.

— Refer maintenance manual

Inspection & Maintenance

Visual inspection for any damage or loose fixings must be done periodically and prior to use. No certified maintenance required. Basic wear and tear preventative maintenance is recommended, as per manufacturer's specifications and recommendations.

— Refer maintenance manual

Tuffgard