

TR10 Tuffrail Hot-dip Galvanized Industrial Handrail Specifications

Single Toprail For level and rake applications



Key features

- > Prefabricated flexibility
- > No-weld assembly
- > Flat pack delivery
- > Reduced corrosion
- > Available ex-stock
- > BIM & CAD Support

Applications suited to

- > Service platforms and mezzanines
 - > Warehouses and loading bays
 - > Airports and shopping centres
 - > Retaining walls and culverts
 - > Roof service areas and fall edges
 - > Pedestrian pathways and footbridges
 - > Carparks and community centres
- Refer to applicable NZ Standards and Building Codes

Specification Summary

Supply and install the proprietary TR10 handrail system to substrate according to Moddex specifications, or by a Moddex accredited installer.

Technical Data

Material

Stanchions, rails & balustrades	Steel/grade C250 & 350
Clamp fittings	Malleable Cast iron
Clamp locking screws	Stainless Steel (304)

Protective coating

Stanchions, rails and balustrades	G390 Hot-dip Galvanized (min 390g/m ²)
Clamp fittings	Hot dip Galvanized with patented protective coating on threads
Optional	Powder coating and paint specs*

*The standard process for Powder Coated and Painted handrail products is as follows: black steel is used for fabrication and then hot-dipped galvanized. Product is then de-gassed and pre-treated before powder coating is applied on top of galvanizing.

Dimensions

Variable depending on building/application/code

Stanchions

Diameter	48.3mm OD 41.9mm ID
Nominal Thickness	3.2mm - 4.0mm (loading dependent)

Rails

Diameter	48.3mm OD 41.9mm ID
Nominal Thickness	3.2mm

Clamp fittings

Thickness	5.0mm (approx)
Locking screws	M12 x 1.75 x 11mm - DEXX [®] Drive

Weight

Variable depending on building/application/code

Stanchion with clamps	7.2 to 8.0kg
Rail @ 6.0m	21.6kg

Fixings

Stanchion attachment to

Concrete	M12 galvanized mechanical concrete anchor
Structural steel	M16 galvanized high tensile bolt set
Timber	Stainless or galv coach screws

*Other Fixing options are available on request

Compliance

Moddex TR10 handrails are designed and manufactured in accordance with New Zealand Standard NZS 1657 and relevant statutory WHS Codes of Practice/Guidelines. Galvanized to AS 4792 and AS/NZS 4680:2006 (where applicable).

Testing

Testing and performance based on requirement of Standard AS/NZS 1170.1 Clause 3.6 Table 3.3.

Static load testing has been performed and independent testing has been carried out to confirm the suitability of the Moddex system in maritime conditions.

Warranty

5 years from date of purchase subject to correct installation, use and maintenance in accordance with manufacturer's specifications and recommendations, unless otherwise negotiated at the time of purchase.

Inspection & Maintenance

Visual inspection for any damage or loose fixings must be done periodically and prior to use. No certified maintenance required. Basic wear and tear preventative maintenance is recommended, as per manufacturer's specifications and recommendations.

Basis of Design

When designed as per the Moddex PS1

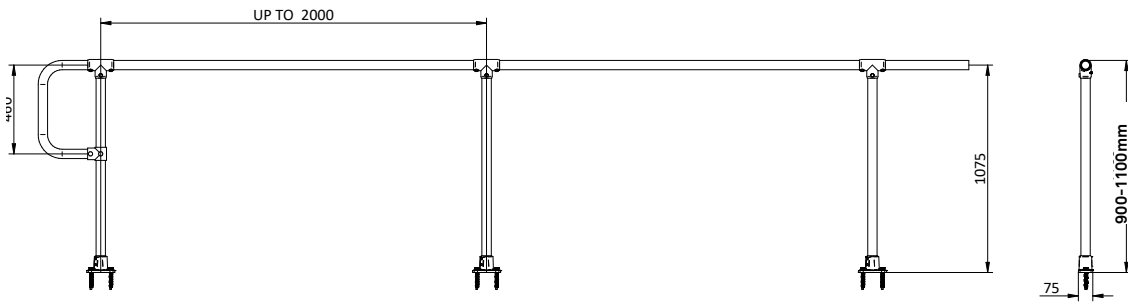
1. Design Life: 50 years minimum
2. Building Occupancy: B, E
3. Loadings: AS/NZS 1170.1:2002 - Table 3.3 AS 1657:2013 - CL6.1
4. Live Loadings: Line: 0.35kN/m
Concentrated: 0.6 kN
Infill: N/A

BPIR

BPIR, set new minimum requirements for the level of information required about building products supplied to the New Zealand market. Moddex is committed to meeting these requirements - download the latest information here:

<https://moddex.com/resources/downloads/#bpir-sheets>

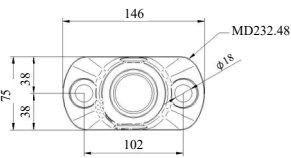
Technical Information



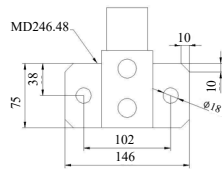
Mount Dimensions

FIXING TO CONCRETE

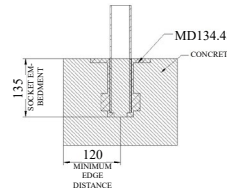
T2 - Top Mount (2 Fixings)



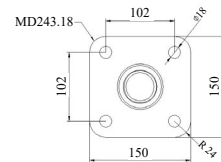
F2 - Face Mount (2 Fixings)



CD - Cored Mount

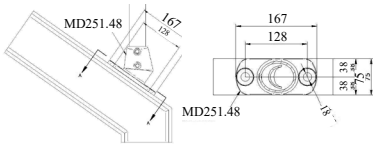


T4 - Top Mount (4 Fixings)

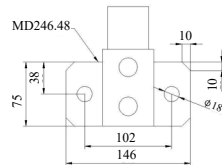


FIXING TO STEEL

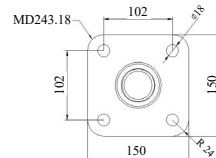
T2 - Top Mount (2 Fixings)



F2 - Face Mount (2 Fixings)

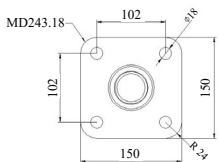


T4 - Top Mount (4 Fixings)

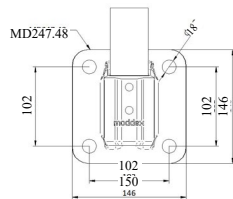


FIXING TO TIMBER

T4 - Top Mount (4 Fixings)



F4 - Face Mount (4 Fixings)



Standard References

New Zealand Standard NZS 1657:1992

3.2 Protection at sides, ends, openings and edges

4.5 Guardrailing

4.6 Handrailing

[DOWNLOAD OUR GUIDE TO HANDRAIL & BALUSTRADE COMPLIANCE HERE](#)

Important Note: Failure to supply and/or install proprietary product in accordance with above Standards and codes and the Moddex PS1, voids complete system certification and/ or warranty.

Designed and manufactured by Moddex. ©Moddex NZ Ltd. All Rights Reserved.

For information or technical support please contact us

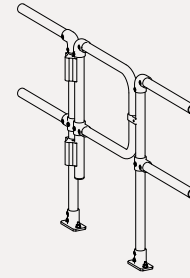
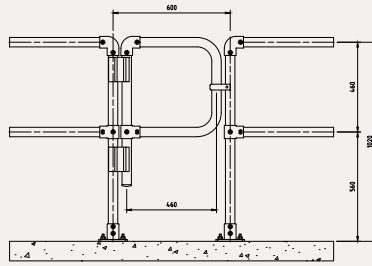
T 1800 663 339 (AU)

T 0800 663 339 (NZ)

moddex.com

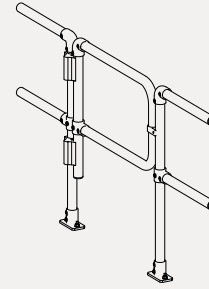
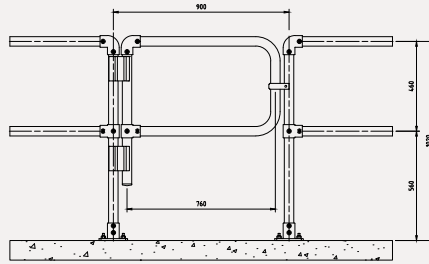
Technical Drawing MD582.0600 – Self Closing Gate

MD582.0600	
Post Spacing	600mm
Length	460mm
Height	460mm



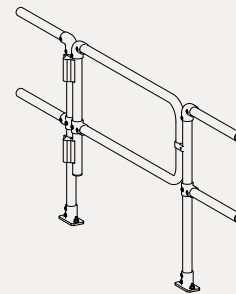
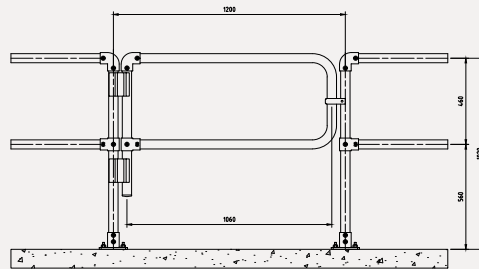
Technical Drawing MD582.0900 – Self Closing Gate

MD582.0900	
Post Spacing	900mm
Length	760mm
Height	460mm



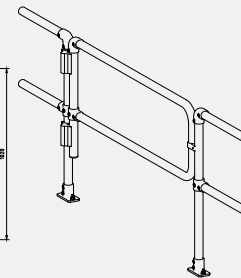
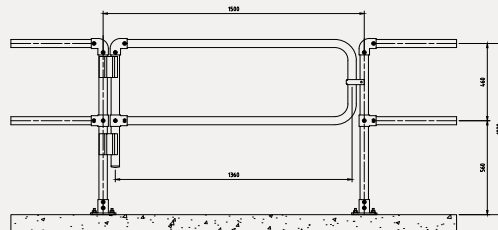
Technical Drawing MD582.1200 – Self Closing Gate

MD582.1200	
Post Spacing	1200mm
Length	1060mm
Height	460mm



Technical Drawing MD582.1500 – Self Closing Gate

MD582.1500	
Post Spacing	1500mm
Length	1360mm
Height	460mm



Technical Drawing – 900mm Custom Gate with Toeboard

MD582.0900 Custom	
Post Spacing	900mm
Length	760mm
Height	1034mm

